

# SPALTEMP

## WATER CIRCULATING TEMPERATURE CONTROL UNITS

Compact design can be double stacked to minimize floor space.

- Full PID auto-tune controller with set point and process temperature readouts
- Delivery and return line pressure gauges
- Complete electrical protection

### STANDARD FEATURES

#### ELECTRICAL

- Disconnect switch
- Main and branch fusing
- Back-up heater safety contactor
- High temperature safety switch
- Grounded control unit

#### PLUMBING & PUMPS

- Simplified piping system
- Pressure safety relief valve
- High temperature solenoid valve
- Heavy duty, horizontally mounted pump with replaceable stainless steel pump shaft, cast bronze impeller and high temperature mechanical seal
- Standard "C" flange motors with cast iron end bells

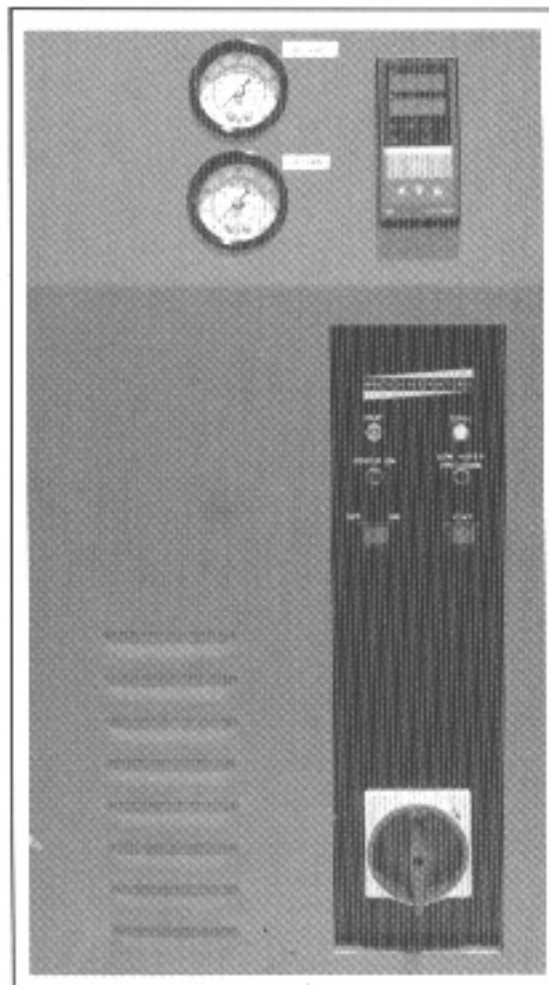


# SPALTEMP

PUMP SIZE	DIRECT INJECTION MODEL NUMBER	CLOSED CIRCUIT MODEL NUMBER	PROCESS PIPE SIZES
½ HP	D-1209	C-1209	1"
¾ HP	D-1309	C-1309	1"
1 HP	D-1409	C-1409	1"
2 HP	D-1609	C-1609	1½"
3 HP	D-1709	C-1709	1½"
5 HP	D-1809	C-1809	1½"
7½ HP	D-1909	C-1909	2"

Water Supply — Drain Piping — 1" NPT

Closed Circuit Heat Exchanger — 3.7 square feet



**Dimensions:** 18"W x 28"L x 24"H (Add 4"H for casters)

#### AVAILABLE HEATER SIZES

4500 watts  
6000 watts  
9000 watts  
12000 watts  
18000 watts  
24000 watts

#### AVAILABLE VOLTAGES

(3 PHASE)

208V/60Hz  
230V/60Hz  
380V/50Hz  
460V/60Hz  
575V/60Hz

#### AVAILABLE OPTIONS

- Remote Mount Controls
- Manual By-Pass Piping
- Interface Communications
- Pressure Regulator/Relief
- Auto Vent
- Pump Tank System
- Visual/Audible Alarms
- Special Paint

**SPALTECH INTERNATIONAL**

7220 West Credit Avenue Mississauga, Ontario, Canada L5N 5N1  
Tel: 905-542-7444 Fax: 905-542-7445 www.spaltech.com